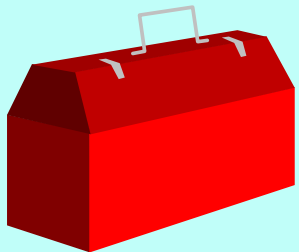


The New

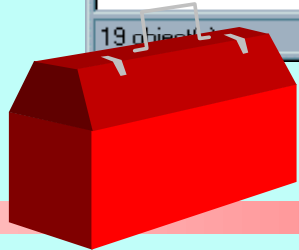
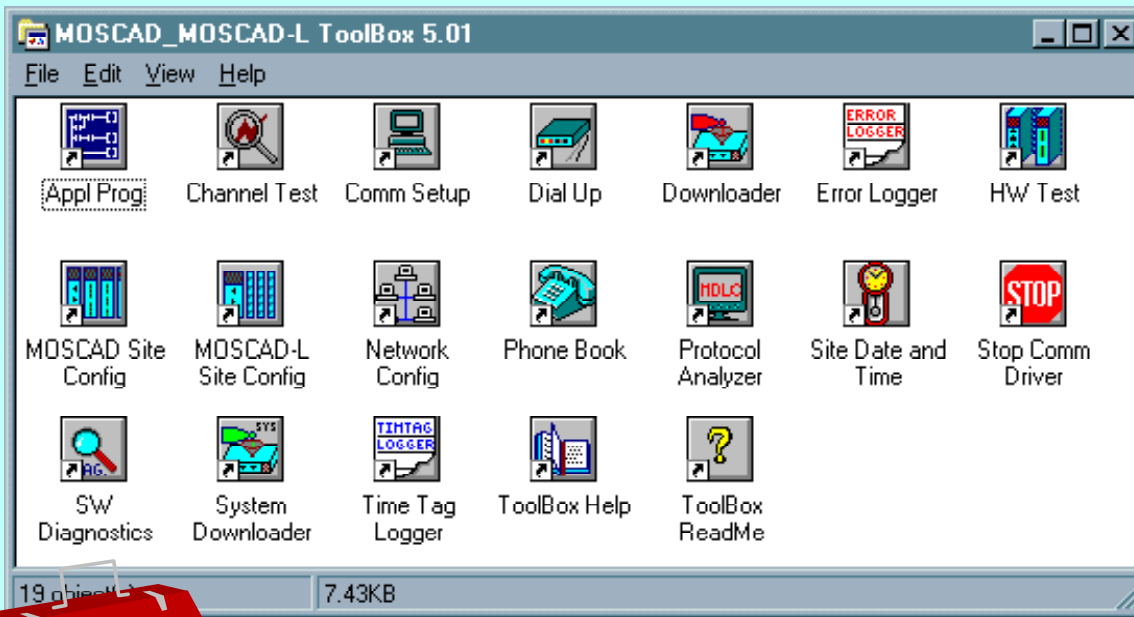
MOSCAD GUI

Programming Tool-Box



More Friendly . . .

- Graphics User Interface
- On-line documentation / help

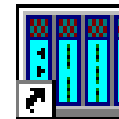


Unified . . .

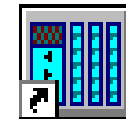
- **Compatible with previous TOOLBOX versions (from 2.20)**
 - Not obligatory to upgrade applications prepared on different versions
- **Compatible with both MOSCAD and MOSCAD-L RTUs**

Information

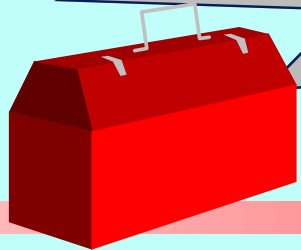
Project Dir: c:\toolbox.220\user\1
Project: master (V2.20)
Configuration: master



MOSCAD Site
Config

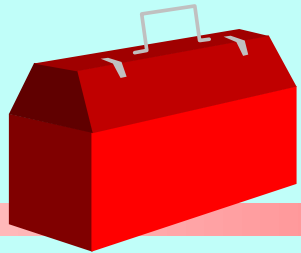
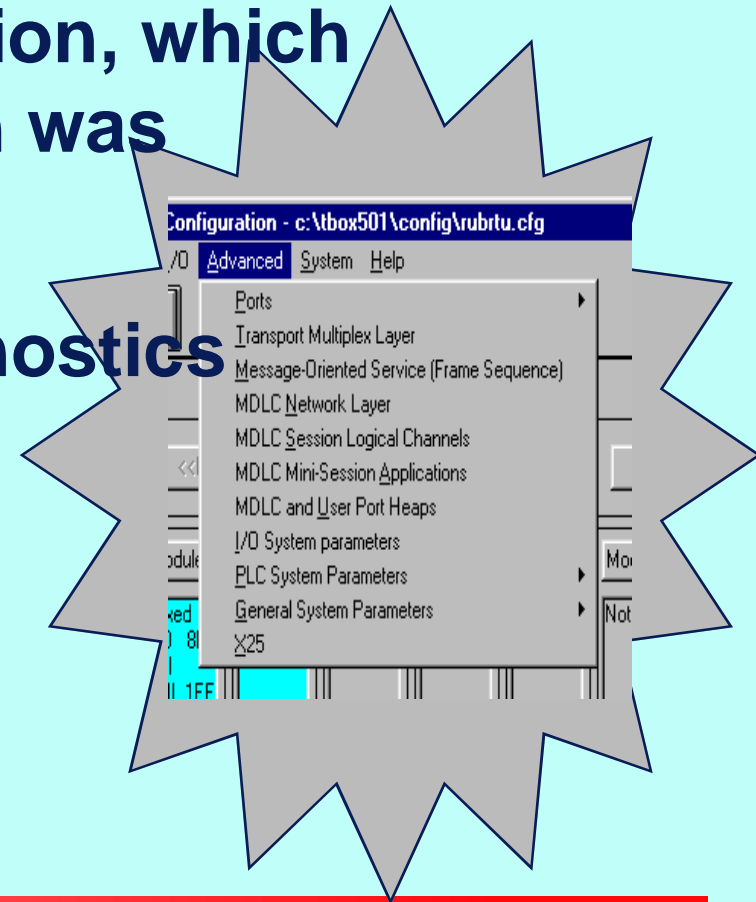


MOSCAD-L
Site Config



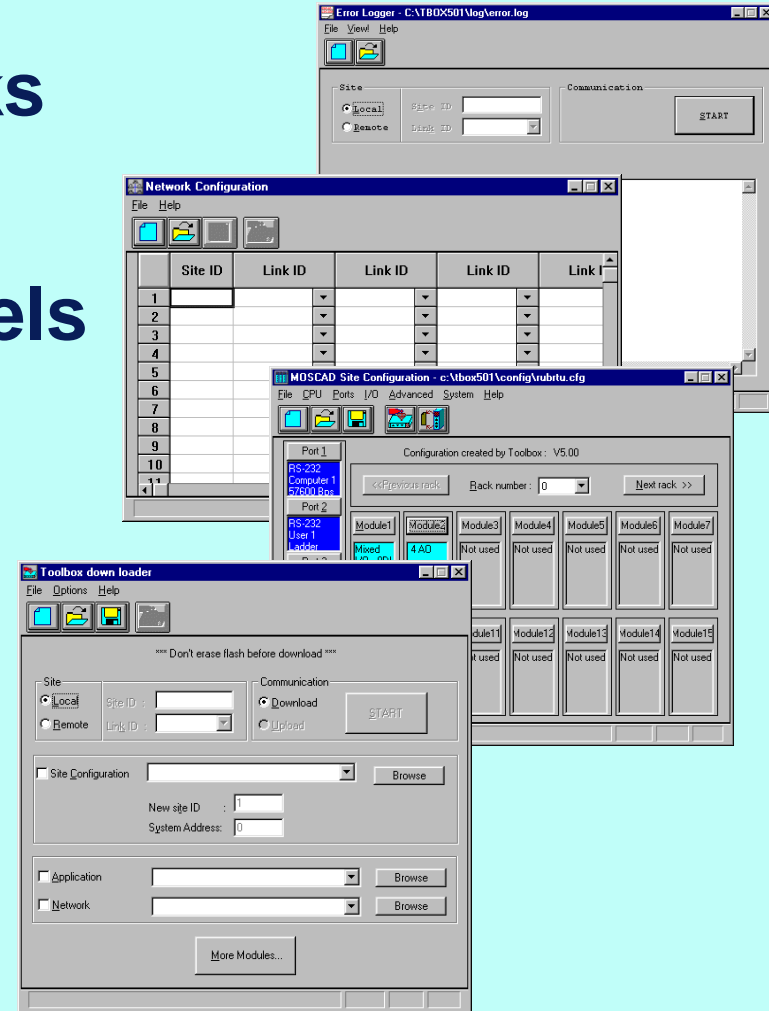
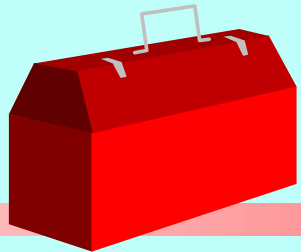
Smarter . . .

- Advanced Parameters are accessible
- Displays the TOOLBOX version, which the application/configuration was created with
- Easier to use Software Diagnostics



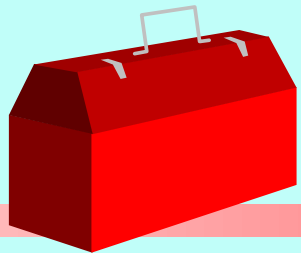
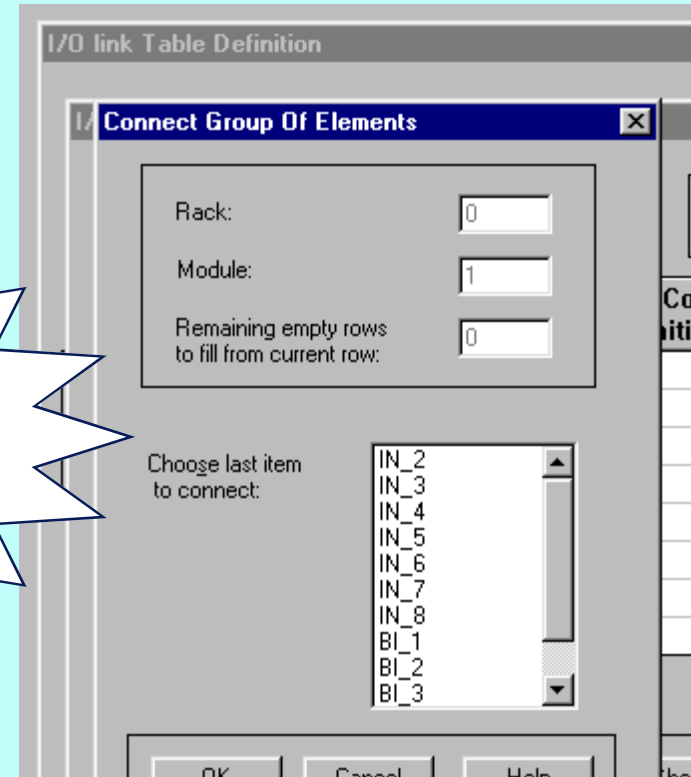
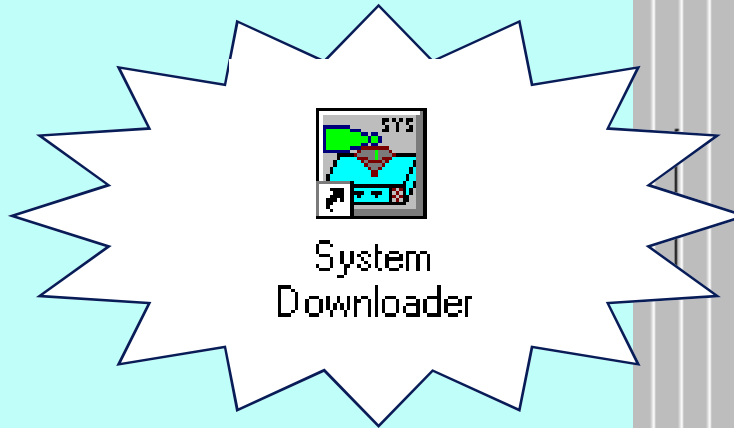
More Powerful . . .

- Multiple Configuration Links
- Can simultaneously work with 5 logical MDLC channels
- Downloader can hold unit sets (in one file) including configuration, application, phone-book, etc.



and More Powerful . . .

- Built-in system downloader (Flash in CPU400 and MOSCAD-L)
- Semi-Automatic I/O Link



More To Come . . .

- **Version 6.00**
- **X.25 Service User (optional)**
- **PID, AGA3/7**
- **Fault Management parameters**
- **Support new modules in MOSCAD-L: 6AI, 8DO**
- **Support new modems:**
 - » **FSK, 2400 bps (1200 or 1800 bps - optional)**
 - » **DFM, 4,800 bps (2,400 or 3,600 bps - optional)**
 - » **COS radio modem, 9,600 bps (radio dependent)**

