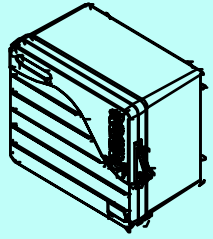


MOSCAD '7



MOSCAD-L

Lighter

Leaner

&

Lower-cost

Smaller



MOSCAD-L

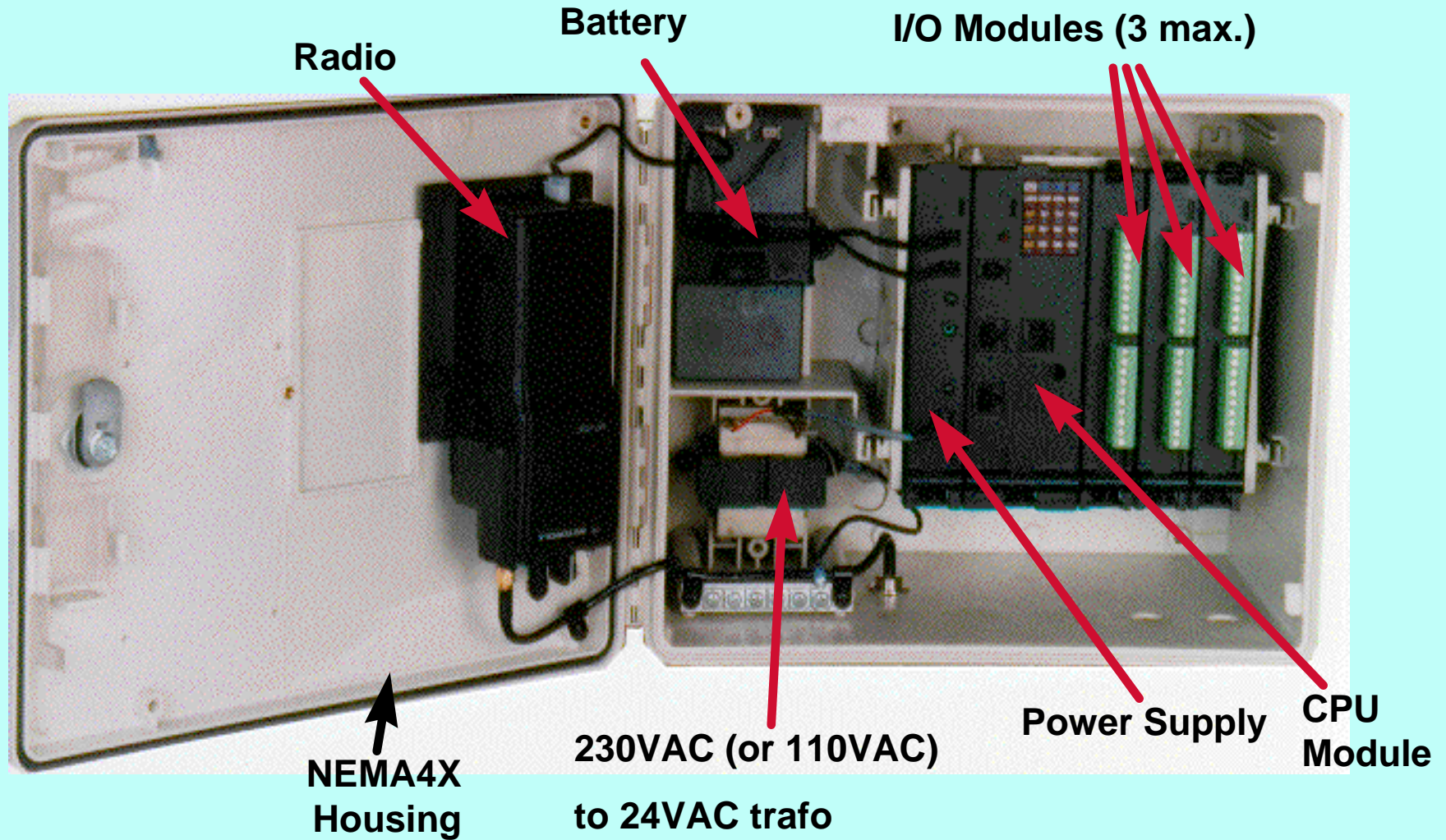
Lighter
Leaner
Lower-cost
Smaller

&

Introducing
Lots
of new
opportunities\$



Physical Structure

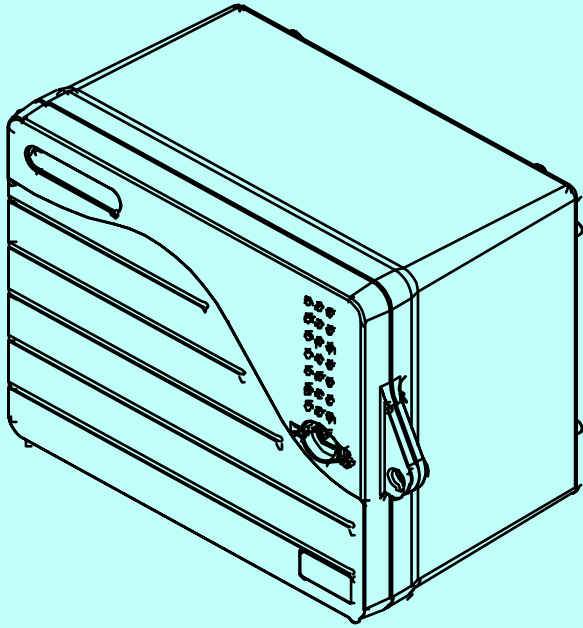


SmaLler & Lighter

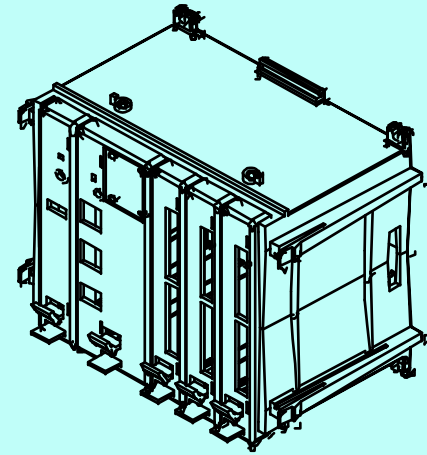
- Fiberglass-reinforced LEXAN enclosure
 - NEMA4X, IP65
- Mounting brackets, pole-mount plate (optional)
- Approximately 8Kg total weight
- External enclosure dimensions:
37 x 28 x 22 cm
- Internal snap-in box dimensions:
19 x 15 x 10 cm



SmaLler & Lighter



37 x 28 x 22 cm



19 x 15 x 10 cm



Leaner

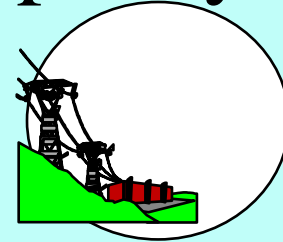
- Input power:
 - 117VAC/230VAC transformer
 - 19-28VAC or 21-50VDC
 - 12VDC (suitable for solar panel)
- 1.2 A-h or 3 A-h back-up battery
- Low power consumption
- Floating 24VDC 250mA output for wetting DIs
- Auxiliary 12VDC connector



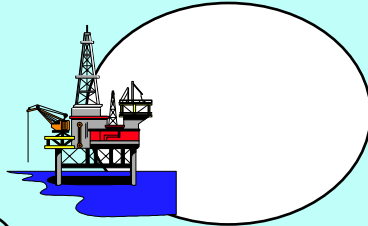
Potential Markets

Basically, wherever low I/O capacity is needed

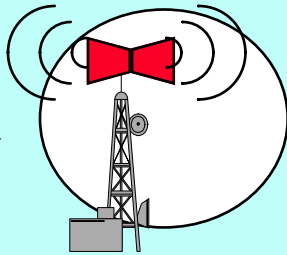
- Electric Utilities for DA applications



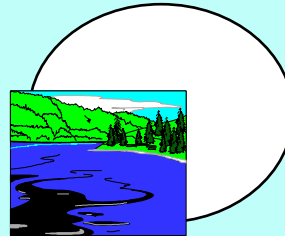
- Gas and Oil



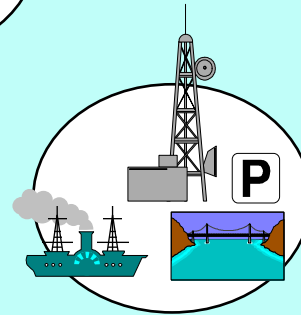
- Siren



- Water and waste water



- Communication related projects



Features Summary

- Low cost
- Fixed size, fiberglass housing
- Modularity - up to 3 I/O modules
- Built-in radio (HT1000, GP900 and MTS2000)
- Fully programmable (same programming features as MOSCAD)



Features Summary (Continued)

- Similar serial-ports & communication features as MOSCAD
- Low current consumption
- LED display for ease of maintenance
- Full compatible communication protocol with MOSCAD (MDLC)
- Enables integration of MOSCAD & MOSCAD-L in the same system

Hardware Configuration

- CPU

- 68LC302 Integrated Multiprotocol Processor

- Memory

- Flash: 1 Mbyte
- RAM: 256 Kbyte

- Communications

- RS232 2 ports: 1B and 2
- RS485 1 port 1A (instead of RS232 port)
- Internal Modem DPSK
- Built-in Radio
- Piggyback Radio (FSK, DFM, COS), **Spread Spectrum radio (900MHz, 2.4Ghz - with some limitations),** Leased line, Multi-drop, Dial-up



Hardware Configuration (Continued)

- DIGITAL INPUTS

- 16 inputs p/module.
- Dry/Wet, AC/DC, inputs (20 to 56V - DC & AC)

- DIGITAL OUTPUTS

- 8 outputs p/module.
- Electrically energized/Magnetically latched

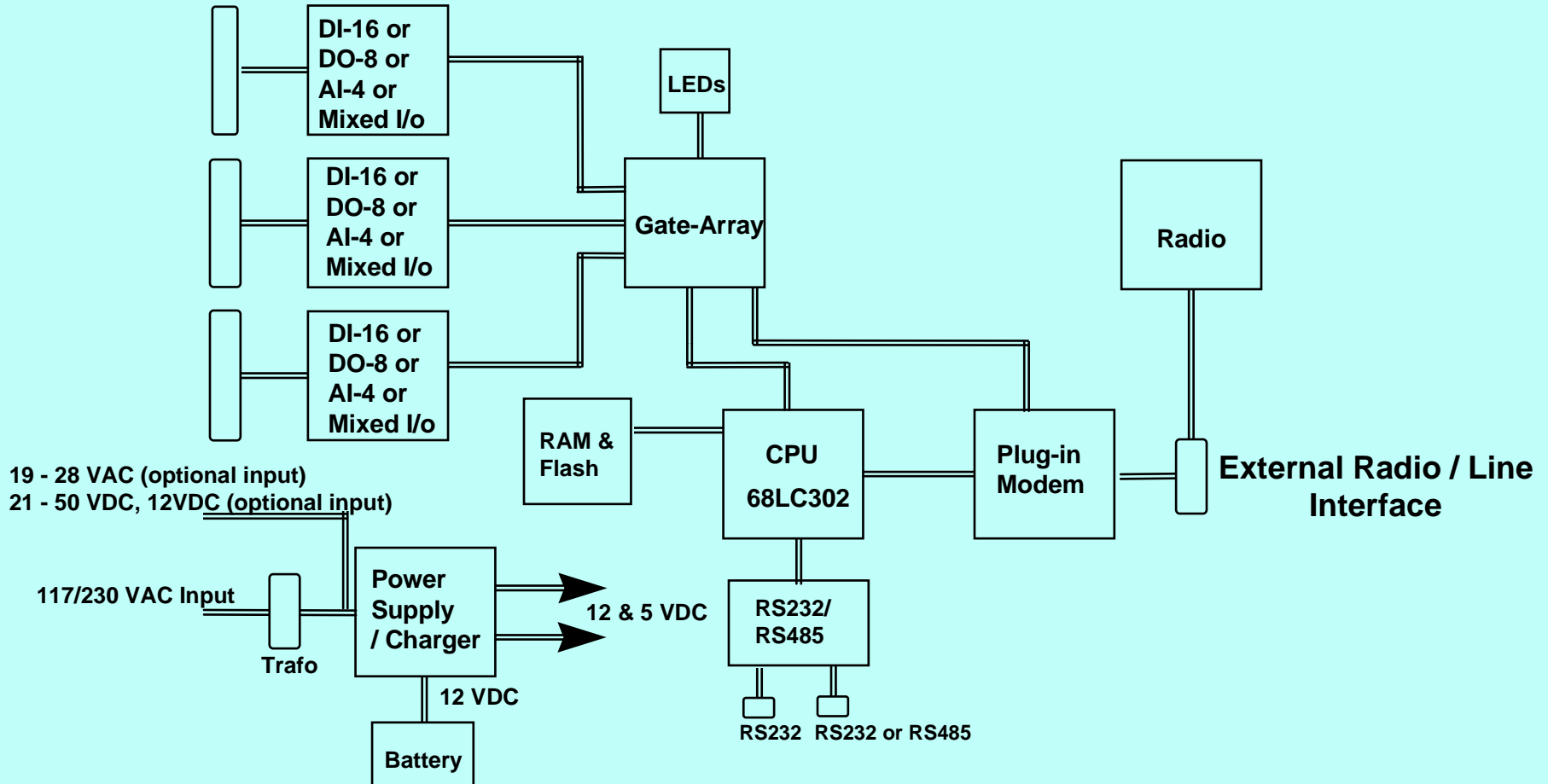
- ANALOG INPUTS

- 6 inputs p/module.
- Input Type: 4-20 mA
- Mixed I/O: 8 DI, 2 DO & 2 AI

Hardware Configuration

Block Diagram

User Connections



Technology

- 68LC302 CPU and auxiliary circuits
- Gate-array
- FLASH Memory - FlashPort Technology
- Fiberglass Housing
 - Rugged structure
 - 7 mm typical wall thickness
 - Injection molding, structural foam LEXAN



Standards

- Complies with the following standards:
 - Dust and Water IP65, NEMA4X
 - Surge withstand ANSI/IEEE C37.90a, IEC801-5
 - Insulation IEC255-4
 - Rad. Emission FCC Part 15, class B, EN55022B
 - Cond. Emission EN60555
 - Voltage Fluctuation EN80555-3
 - EMC IEC 801-2, 3 & 4 (ESD, RFI & EFT)
 - Safety UL/CSA 1950, EN60950



Summary

- Complete your solution's portfolio using MOSCAD-L when small amount of I/Os are required
- Enlarge your involvement in new opportunities suitable for MOSCAD-L
- Use MOSCAD & MOSCAD-L combination to provide a cost & feature effective solution for your customer
- Cost performance intelligent RF Modem
- “MOSCAD is too expensive” sentence will no longer be accepted as an excuse!



MOSCAD-Lets

get the bussiness!!

