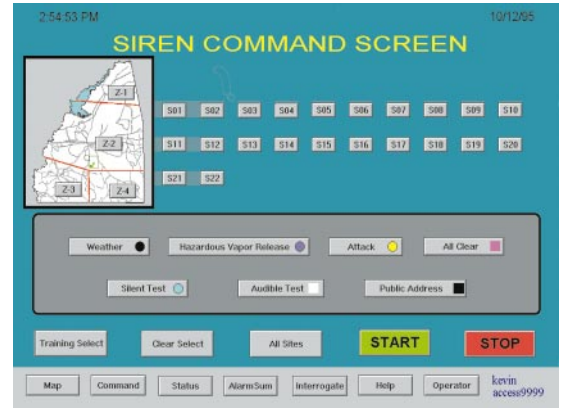


# PC Control Center for Siren Activation

Custom displays, similar to the Map Overview (right) and Command (far right) screens, provide simple, intuitive control of the siren system.



## FEATURES/BENEFITS

### Sophisticated Siren Control Systems

The MOSCAD PC Control Center provides operators a simple method of controlling their siren warning system. The intuitive Graphical User Interface (GUI) features information presentation that is customized to the unique control requirements of their system.

◆ *Using a control console that is easy to operate under stress builds the operator confidence needed when emergency situations demand flawless operator performance.*

### PC Hardware

A PC computer is used at the control center. This hardware is selected for its reliability and speed of operation. Accessory items such as log or report printers are available to satisfy total system requirements.

◆ *A computer is increasingly familiar to operators in system control rooms; they should have little difficulty learning how to operate the siren control system.*

### PC Software

The Software was developed by leading software corporations, has been industry tested, and is used in many installations. Control screen(s) are created to the unique requirements of the system. Alarm screen(s) permit detected alarms and problems to be viewed.

◆ *Microsoft Windows and Wonderware's Intouch are widely recognized and used in automation systems. The ease-of-use and reliability of these software products helps ensure reliable siren control.*

### Multiple Control Centers

The MOSCAD RTU supports Peer to Peer communications so that RTUs in the siren system may receive commands and report back to more than one Control Center. Several computers may be interconnected via a Local Area Network (LAN) at any location to provide multiple operator capability.

◆ *The MOSCAD RTUs will support operation within sophisticated siren control systems that use backup or redundant Control Centers.*

### Single Message Activation

Commands to one or more siren sites are transmitted in a single control message. Verification of proper operation occurs via individual messages.

◆ *A single activation message provides one of the fastest control methods to multiple siren sites. Sites not specified in the activation message will ignore the command.*

◆ *A single activation message places the least possible burden on the radio channel used with the siren control system. The radio system remains available for associated emergency voice messages.*

◆ *Verification messaging may occur anytime while the siren is active, further relieving the radio system of additional traffic.*



**MOTOROLA**

# PC Control Center for Siren Activation

## FEATURES/BENEFITS

### Built-in Training

The control center utilizes a variety of training modes to refresh an operator's memory or to train others in siren activation procedures.

- ◆ The level of training is dependent upon the type of activation central present:
- ◆ Allow an operator to press buttons without activating sirens.
- ◆ An animated tutorial where the computer guides the operator through an activation sequence.
- ◆ In the form of intuitive Help screens that assist the operator.

### Paging System Interface

The control center may include an interface to an alphanumeric paging system. The interface may be to an on-site paging system or modems may be added to interface to an RCC.

- ◆ Alarm pages may be sent to alert the emergency response staff or to notify maintenance personnel of some equipment malfunction.

### General Specifications:

<b>Minimum Hardware Specs</b>	100MHz Mini-Tower Computer 256 kB SRAM Cache 850 MB hard drive 16 MB RAM 1.44Mb 3.5" floppy disk drive 2 Serial & 2 Parallel Ports Mach 64 Pro Turbo Video Card with 2MB VRAM 4X CD-ROM Drive	17" SVGA color monitor Soundblaster 16 Sound Card Mini Speakers Mouse & Enhanced PS/2 Keyboard
-------------------------------	--	---

### Accessories:

Epson FX-1170 wide carriage dot matrix printer & cable HP LaserJet 4L printer & cable 3.1KVA/2200 watts 120VAC/60Hz UPS (Un-interruptible Power Supply)
---



The results of the last activation may be seen on the Status display (left).

System availability information may be seen on the System Manager screen (right).



### SUPPORT SERVICES

Wherever Motorola sells, our product is backed by service. Our products are serviced throughout the world by a wide network of company or authorized independent distributor service organizations.

Motorola U.S.A.  
1301 E. Algonquin Road  
Schaumburg, Illinois 60196  
Phone: 1-800-247-2346

Motorola Canada Ltd.  
3900 Victoria Park Avenue  
North York, Ontario M2H 3H7  
Phone: 1-800-268-5758

Motorola Latin America Division  
899 W. Cypress Creek Rd. #200  
Fort Lauderdale, FL 33309  
Phone: 1-954-928-2000

Motorola Asia Pacific Ltd.  
39/FL NatWest Tower  
Times Square, Causeway Bay  
Hong Kong, PRC-SAR  
Phone: 852-2966-4366



Motorola UK Ltd.  
Jays Close, Viable Industrial Estate  
Basingstoke, Hampshire  
RG22 4PD  
Phone: +44-1256-484341

Ⓜ, Motorola and MOSCAD are trademarks of Motorola Inc. ■ All company and product names are trademarks or registered trademarks of their respective companies. ■ ©1997 by Motorola Inc. ■ Printed in U.S.A. ■ Produced by Customer Communications  
Motorola is an Equal Employment Opportunity/Affirmative Action Employer  
Visit us on the Web at <http://www.mot.com/MOSCAD>